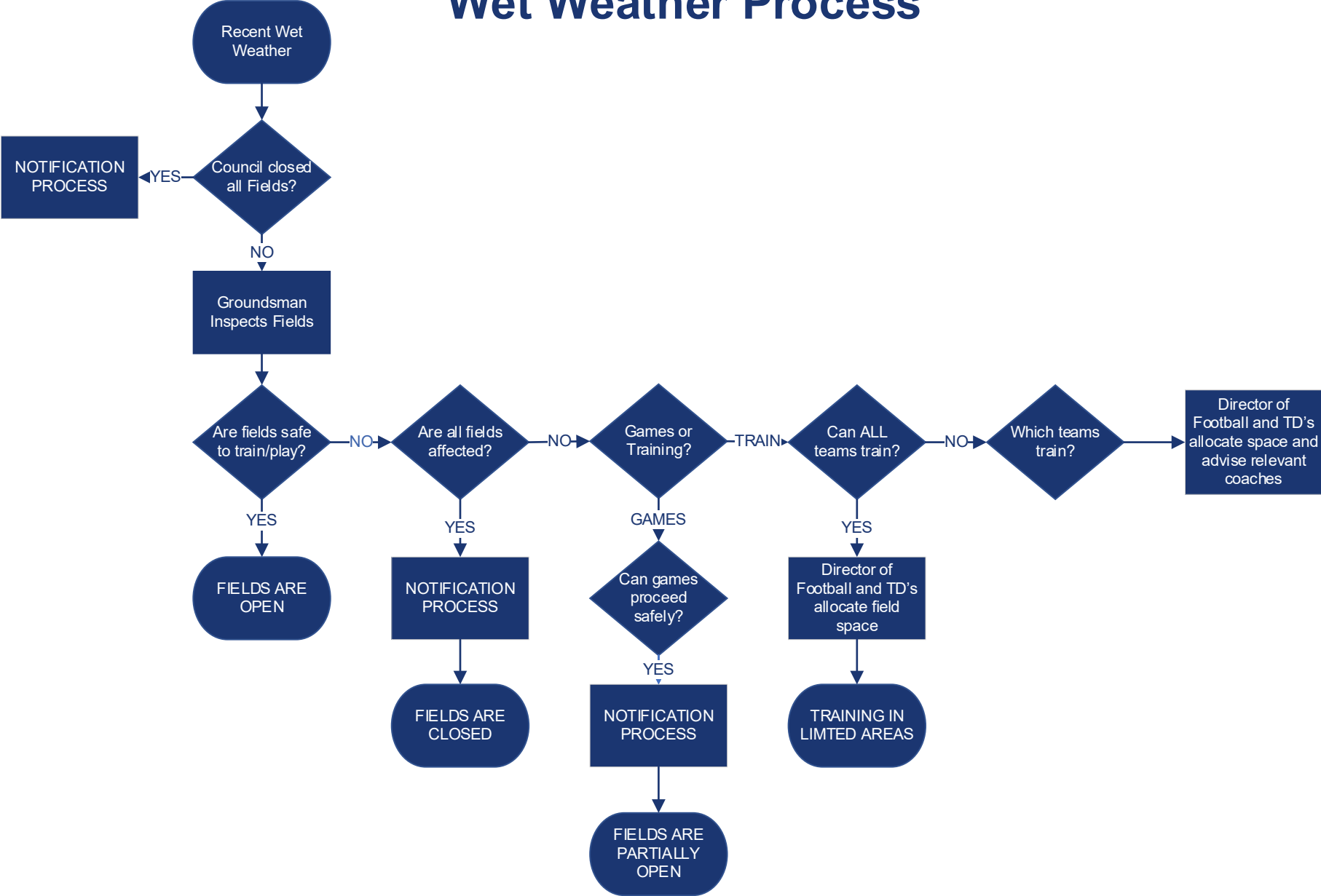




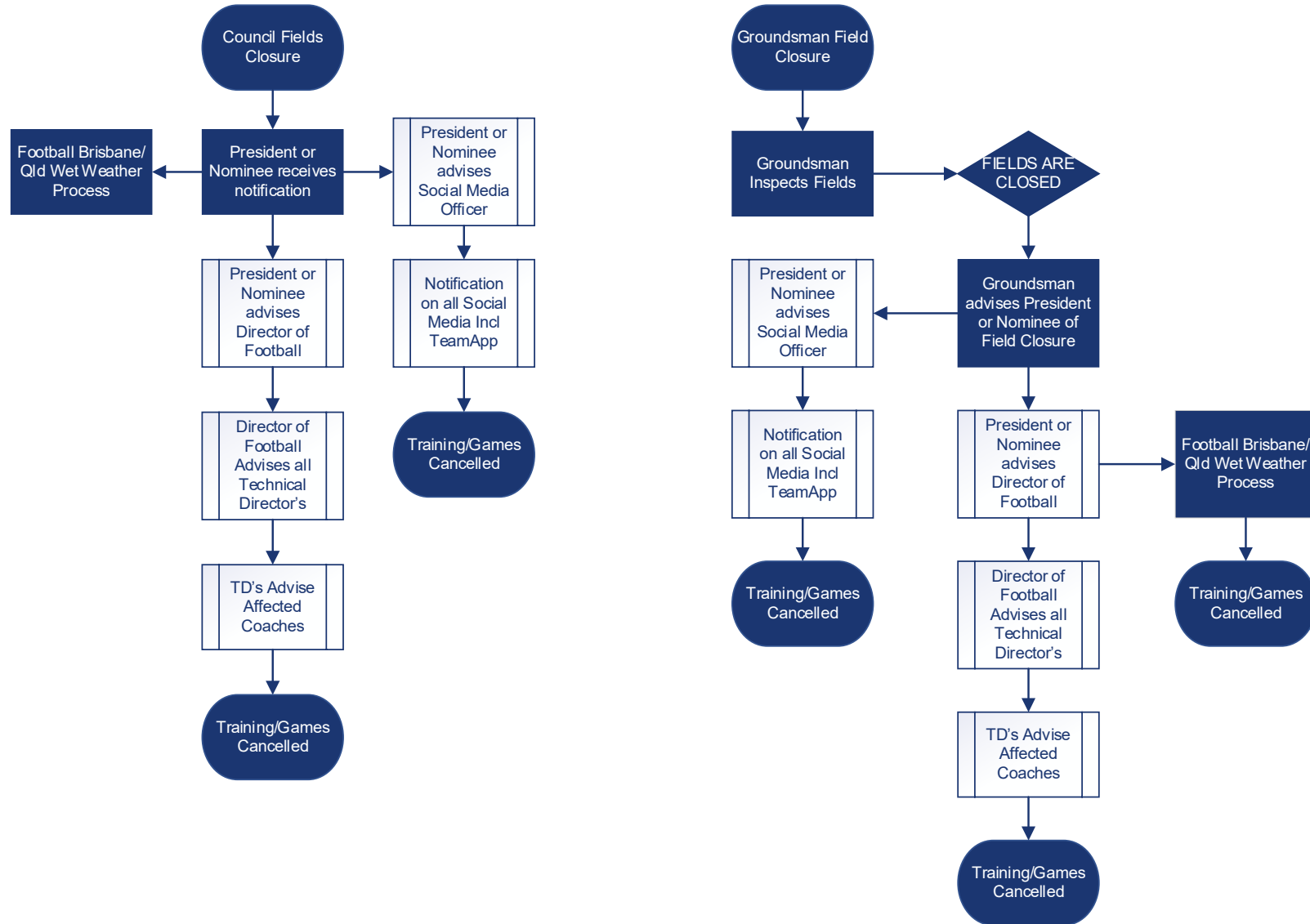
Capalaba FC

Wet Weather Procedure

Wet Weather Process



Notification Process – Field Closure



Key Points:

- Prior to any determination of status of fields by Capalaba FC personnel, Redlands Council Website should be checked for the current status of all Council fields.
www.redland.qld.gov.au/info/20115/parks_venues_and_facilities/118/sports_fields_and_facilities.
- Field status options are:
 - Open (all city fields open)
 - Closed (all city fields closed); or
 - Use at own risk (users liable for any damages caused to fields and/or facilities).
- Council will usually email Capalaba FC's President should they close all fields but this may not always be done.
- Where weather has been inclement or there is a risk of playing fields be unsafe, the Groundsman should undertake a Field Inspection prior to 3pm daily and immediately notify Capalaba FC's President of the status of the fields (open, closed, partially closed) who should follow the "Notification Process – Field Closure" immediately.
- Whilst the desired outcome is for games or training to continue unaffected, it is essential when making a decision whether to close fields or not, that the following principles are applied in the following order:
 - 1) Will players, spectators, visitors or coaching staff be placed at risk of injury if fields remain open?
 - 2) Is there risk of damage or undue wear to playing fields or their environs if fields remain open?
- At no times should any consideration be given to closing fields if the result of an abandoned game could impact the outcome of a competition or standing in a competition.

Timeline – Field Closure Notification

Training Nights

- i. 3:00pm or prior – field inspections undertaken
- ii. 3:30pm – President or nominee notified of Field Closure (full or partial)
- iii. 3:45pm – Director of Football advised of Field Closure (full or partial)
- iv. 3:45pm – Social Media Officer advised of Field Closure (full or partial)
- v. 3:50pm – Technical Directors (FQPL, NPLW, Mini-roos, Community) advised of Field Closure and revised arrangements
- vi. 4:00pm – Social Media notification (FaceBook, TeamApp) of Field Closure
- vii. 4:00pm – Technical Directors advise affected Coaches of Field Closure (full or partial)

Timeline – Field Closure Notification

Game Day

Refer to competition organisers Wet Weather Procedures for direction

- Football Brisbane: <https://www.footballbrisbane.com.au/wet-weather-procedures>
- Football Queensland: <https://footballqueensland.com.au/wp-content/uploads/2018/12/2019-FQ-Competition-Regulations.pdf>